



Bargen Ddinesig
BAE ABERTAWE
SWANSEA BAY
City Deal

SBCD Highlight Report
March 2021



Digital Infrastructure



Programme Partner Lead: Carmarthenshire County Council



Activities Completed

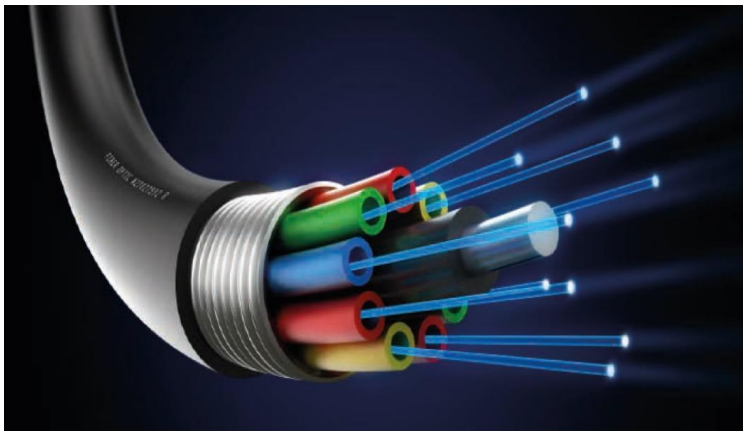
Recommendations implemented from external stage gate peer review.

Business Case submitted to both Governments and feedback addressed.

Preparation for Project Manager resource recruitment.

Regional funding bid submitted to Welsh Government Local Broadband fund to supplement existing plans and resources.

Ongoing engagement with partners at local, regional and national level.



Activities Planned

Project Manager resource recruitment.

Professional services resource recruitment.

Detailed scoping of specific individual Projects within the Digital Programme.

Further develop procurement and state aid strategy.

Financial budget set up.

Further engagement with partners at a local, regional and national level.



Risks

Ongoing policy alignment of Regional Digital Infrastructure strategy and Welsh Government (PSBA).

A lack of Telecoms suppliers with the necessary appetite and / or ability to deploy, particularly rurally.

Government timescales for authorising the Business Case.

Issues

Lack of human resource allocated to the Programme.

Insufficient financial resources allocated to address all the regions Digital Infrastructure aspirations.



Pembroke Dock Marine

Project Partner Lead: Pembroke Dock Marine Board



Wave Hub



Tim James
Project Manager

Activities Completed

PCF's [Marine Energy Wales conference](#) promoted PDM and the Partners who all presented to an international audience of over 300 delegates. [MEECE](#) also hosted a side event. (OP11/12/16).

[PCC paper to committee confirming evolution to PDZ and confirmation of funding agreements](#) (IP4)

Partners all submitted evidence to [BEIS consultation for CFD amendments](#) supporting FLOW and Marine Energy revenue support (OP15)

Shell and Pembroke Dock Based Simply Blue Energy announce [the Emerald Portfolio development more floating wind in the Celtic Sea](#) (IP3, OP1, OP3, OP6, OP8).

South Wales Industrial Cluster [Roadmap](#) and Deployment project have both been approved leveraging £2.3m & £37m respectively of added value work across South Wales (IP3/OP5/6/8)

MHPA exchange contracts with [High Speed Transfers Ltd](#) for office and warehouse space in Pembroke Dock (OP1, OP2)

Pembroke Dock based Mainstay Marine win 5th prototype build with [QED Naval](#). PD based Williams Shipping launch [new renewables section](#) of their website. (OP11, OP13)

Activities Planned

MEW's State of the Sector Update is going to be live April 21. (IP3, OP1, OP2, OP6)

META discharging planning conditions and head lease with Crown Estate. (IP5)

Recruitment and commencement of PDZ phase 1 post signature. (IP6d)

MEECE's collaboration agreement with Universities. (IP6b)

Consent management PDI (IP1)



Risks

Capital cost increase against PDI project budget set in 2017. (IP1)

MEECE now required to formally request to extend project to WEFO due to delay in SBCD approval. (IP6b)

PDZ Phase 1 completion finds project is not feasible (industry requirements / budgets / timescales) (IP4)

Issues

Consideration of the changes in UK procurement policy on the SBCD procurement principles & how it applied to the PDM partners as non contracting authorities.

Ensuring appropriate level of project governance and reporting is established to maintain the projects value to the SBCD whilst ensuring the project remains delivery and impact focused.

Homes as Power Stations

Project Partner Lead: Neath Port Talbot Council



Lisa Willis
Project Manager

Activities Completed

Gateway review completed June 2020

Economic Case revised

Pathfinder development at Neath complete

HAPS regional Project Board established and meets monthly

Business case submitted to PMO in January 2021

First lessons learned meeting took place.



Activities Planned

Third party funding agreements to be developed / agreed for the two HAPS funds

Workshop with key stakeholders to develop brand

Lessons learned group to meet bi monthly.

Technical advisory group to be established

Project team to be recruited



Risks

Project Manager not yet in place. Recruitment process to commence.

Issues

Ensure alignment to other energy efficiency in housing programmes. This is in progress



Supporting Innovation & Low Carbon Growth



Lisa Willis
Project Manager

Project Partner Lead: Neath Port Talbot Council



Activities Completed

Swansea Bay Technology Centre - RIBA Stage 5 construction commenced 12/10/2020

Steel and metals project refocused to align to the industrial decarbonisation agenda

Critical Friend Review completed October 2020

Supporting Innovation and Low Carbon Growth Programme Board established and meets monthly.

Welsh Government / UK Government workshop November 2020

Industry Wales workshop November 2020



Activities Planned

Business Case due for formal submission to PoMO and Governments February 2021. Aligned to HMT Green book amendments.

Air Quality Sensors planned to be installed in March / April 2021

Critical Friend Review action plan in delivery phase

Establishing Technical Advisory Group

Ongoing regular dialogue with UK and Welsh Government and Industry Wales.



Risks

Delay in approval of City Deal Business Case impact on already secured European Regional Development Fund match funding

Air quality monitoring sensors purchased at risk prior to business case approval

Covid-19 impact on jobs created outputs

Issues

Need to ensure Low Emission Vehicle Charging Infrastructure sub-project aligns to current and pipeline regional activity



Life Science & Well-being Campuses

Keith Lloyd
Project Lead

Project Partner Lead: Swansea University



Activities Completed

Collaborative research and innovation activities continue

Development of new skills provision under development

Informal submission of the Business Case in Q4 2020 to the PoMO

Finalised feasibility studies with architects and cost consultants

Activities Planned

Address Business Case feedback in Q1 2021 from both PoMO and Grant Thornton Consultants

Continue to obtain letters of support to evidence partner commitment to support outline business case

Progress structured private sector engagement activities/plan

Confirm and finalise commercial arrangements between City & Council and the Health Board

Secure additional resource to help progress the project to time.

Formal submission of the Business Case in Q2

Risks

Impact of current pandemic and economic downturn on securing co-investment from the private sector

Impact on timescales as a result of the pandemic, impact on private sector and competing priorities particularly in health

Impact on delivery due to lack of resource.

Issues

Communication of the project's evolution



Pentre Awel

Project Partner Lead: Carmarthenshire County Council



Dr Sharon Burford
Project Manager

Activities Completed

- RIBA Stage 3 designs and recommendation finalised and approved by Executive Board and Full Council.
- Business Case complete and submitted to Governments. A feedback meeting has been held and questions received from both WG and UK Gov answered and returned.
- External Gateway Review recommendations actioned.
- MoU signed with Academic and Research Partners
- Ecology work completed.
- Memorandum of Understanding prepared and issued to Financial Markets
- Initial Stage 1 proposal submitted to Department for International Trade (DIT)
- Procurement documents prepared for Zone 1 and ready for issue to SWWCF. Significant work to emphasise the quality aspects of the procurement including the Community Benefits.



Activities Planned

- Design development for Zone 3
- Secure the main contractor for Zone 1 through procurement
- Complete procurement for client side services for Zone 1
- Development of Heads of Terms progressing
- Continue DIT submission
- Secure best finance option for CCC from Institutional bids. Institutional investment not required for zone 1.



Risks

Potential for loss of engagement by academic and health partners due to delay.

Issues

Delay in procurement due to approval of City Deal Business Case



Swansea City & Waterfront Digital District



Huw Mowbray
Project Manager

Project Partner Lead: City & County of Swansea



Cyngor **Abertawe**
Swansea Council

Activities Completed

Arena

Arena external cladding commenced.

Work is advancing on iconic bridge linking the arena site with Swansea city centre to be put in place early 21.

71/72 kingsway

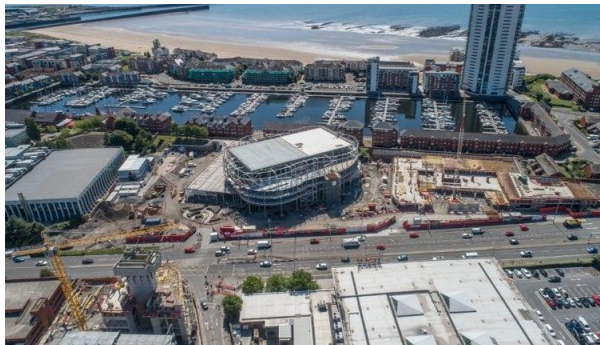
Construction tender clarifications of responses awaited.

Cabinet report targeted for March 2021.

Letting discussions continue.

Box Village

Planning permission for Box Village progressing.



Activities Planned

Arena

Letting discussions on ancillary commercial space at arena.

Bridge fabrication to be completed.

71/72 kingsway

Construction tender for 71/72 The Kingsway analysed.

Cabinet decision on 71/72 The Kingsway Q1 2021

Further detailed lettings discussions continue for 71/72 The Kingsway

Box Village

Pre application discussions on planning.



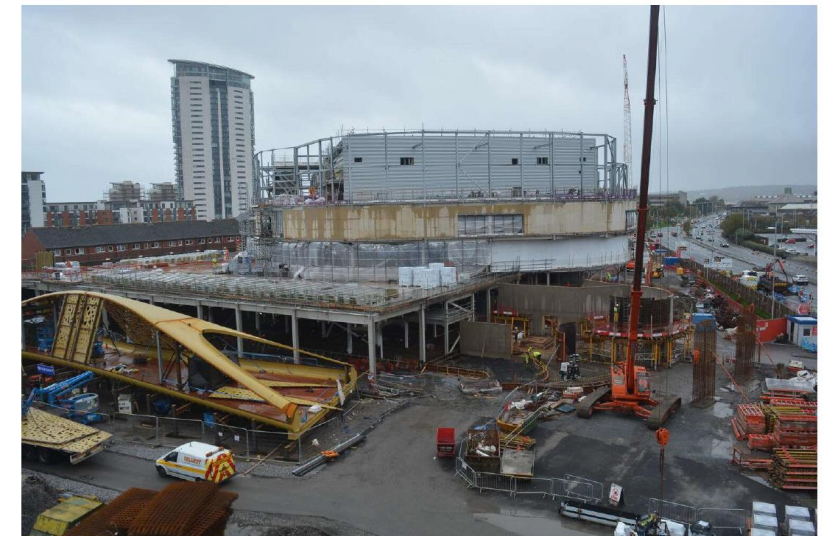
Risks

Effect of Covid-19 on construction, including programme slowdown and impact on costs

Effect of Covid-19 upon level and type of commercial demand for Box Village and Innovation Precinct

Issues

Delivery of outputs likely to be affected by Covid-19



Arena waterproof cladding. Bridge construction

Skills and Talent

Project Partner Lead: Carmarthenshire County Council



Jane Lewis
Project Manager

Activities Completed

Economic Case for the Business plan in development, working with Joe Flanagan, Advisor to the Welsh Government on the 5 case Business model.

Strategic, Financial and Management case complete,

Liaison with Belfast and Edinburgh City Deal to examine areas of best practice

Pilot initiative for Engineering and Digital in schools developed



Activities Planned

Establishment of a Programme Board for Skills and Talent by March 2021.

Present and update to Programme Board in March.

Complete Business Case and present to ESB, Programme Board, Joint Committee and the Local Authorities by end April.

Gateway review by end of March.



Risks

Delay in implementing the Skills and Talent programme could impact on the delivery of the skills required by the approved projects

Issues

Impact of Covid-19 on the training landscape and the changing needs of businesses as a result of the pandemic



Yr Egin

Project Partner Lead: UWTSD



Prifysgol Cymru
Y Drindod Dewi Sant
University of Wales
Trinity Saint David



Geraint Flowers
Project Manager

Activities Completed

The Phase 1 Lessons Learned Activity successfully completed, which brings the University's evaluation process to a close in advance of formal Gateway 5 Monitoring and Evaluation approval

Creative Sector Demand Study formally commissioned and underway (BOP)



Activities Planned

Following completion of the Egin Phase 1 project and Joint Committee approval of the Full Business Case, the University is now proceeding with the next stages of the Integrated Assurance Action Plan in accordance with the agreed timetable to deliver Egin Phase 2

Formal Welsh/UK Government business case approval still outstanding as of 11th November

Discussions between Carmarthenshire County Council and the University are proceeding at pace to complete the Phase 1 Funding Agreement

Creative Sector Demand Study to complete in May 2021 to inform the development of Egin Phase 2



Risks

Effect of Covid-19 on the Welsh/UK/global economies and the creative sector, and the implications for future level and nature of demand for Yr Egin

Issues

Implications of the recently announced Welsh Government strategy to achieve much increased levels of permanent remote working post Covid-19 and to develop a network of local, community-based working hubs

